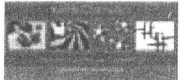


Contents



Uprights x 4



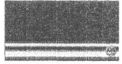
Display Header x 1



Header Rail x 1
(Slotted at top)



Connecting x 7



Trays x 18

You will also need
a rubber mallet
or similar

Notes: Ideally, you will need two people to build the stand. The MDF is quite delicate if bent against the grain and will snap. Caution is required when tapping the connecting rails into the slots to ensure they are square. If they are tapped down at an angle, they are likely to snap.

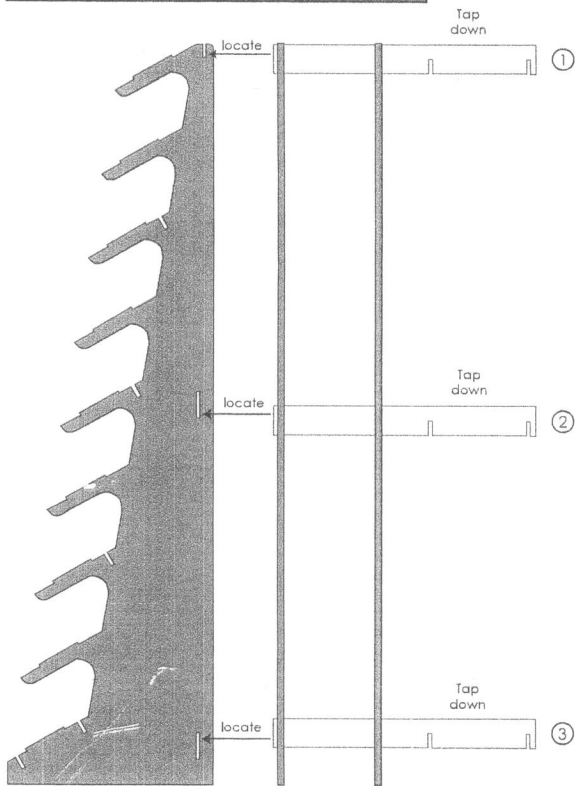
Stage 1 - One person hold two of the uprights apart and vertically, at approximately the same distance as between the slots of the connecting rail
Slot the header rail through the top slot in the upright and carefully tap down into place using a rubber mallet.
Carefully slot the header rail through the top slot in the second upright and tap down. The structure should now stand on its own
Repeat the process with the second and third connecting rails taking care to keep the uprights square when tapping them down

Stage 2 - Carefully slot the remaining uprights through the connecting rails to form a rigid structure

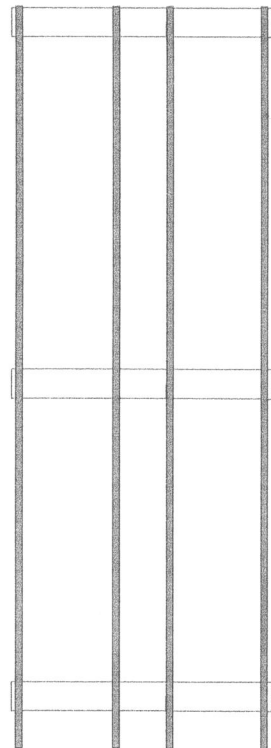
Stage 3 - Starting from the top, carefully tap the remaining connecting rails into the slots at the front of the uprights to provide extra stability

Stage 4 - From the left, slide the header board into the slot on the header rail and centralise

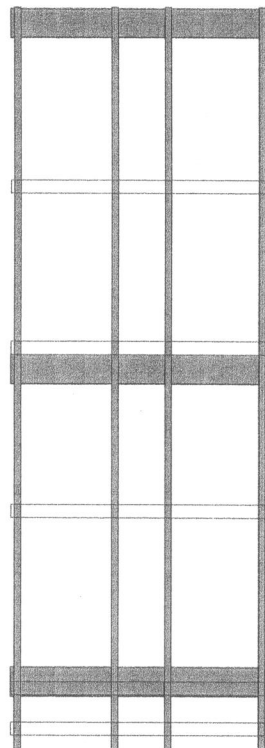
Stage 5 - Position the stand in the correct place in your store as it is very heavy once stock has been placed on it
Begin positioning the trays on the stand by lining up the slots in the bottom of the tray with the lugs on the uprights
Be sure to locate the tray firmly on the lugs. You may need to lift the egg tray insert up slightly and push the bottom of the tray against the lug
Continue adding the rest of the trays in the same manner until all of the trays are displayed



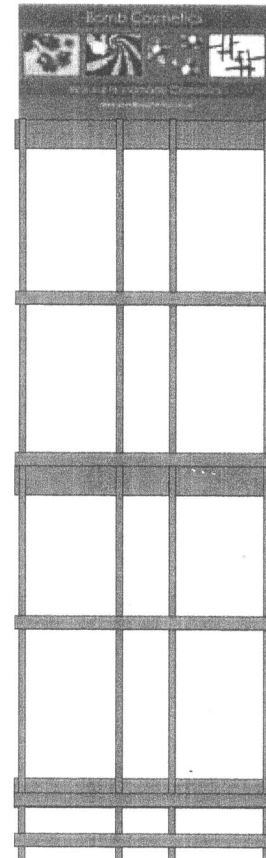
Stage 1



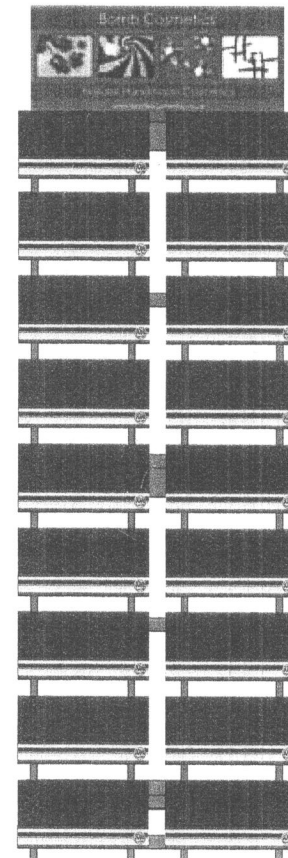
Stage 2



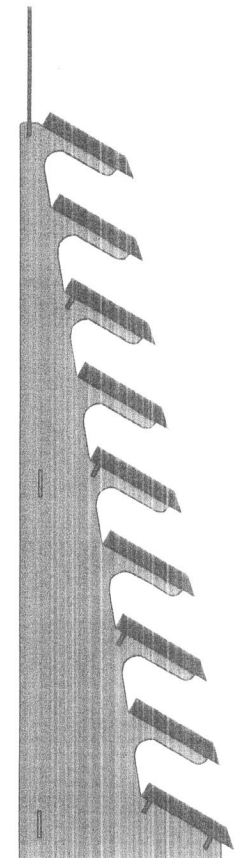
Stage 3



Stage 4



Stage 5



Side View